

Corrugated Back Moulder Heads



- Precision manufactured and balanced
- Made in USA
- Standard sizes available
- Custom sizes available
- Straight Bore

12° or 20° Hook Angle Moulder Heads

PART NUMBER	CUTTING CIRCLE		CUTTING LENGTH		BORE DIAMETER	NUMBER OF KNIVES	HOOK ANGLE
	mm	inch	mm	inch			
CST122060382**	122	4.803	60	2.362	1 1/2"	2	12° or 20°
CST122100382**	122	4.803	100	3.937	1 1/2"	2	12° or 20°
CST122130382**	122	4.803	130	5.118	1 1/2"	2	12° or 20°
CST122150382**	122	4.803	150	5.906	1 1/2"	2	12° or 20°
CST122180382**	122	4.803	180	7.087	1 1/2"	2	12° or 20°
CST122230382**	122	4.803	230	9.055	1 1/2"	2	12° or 20°
CST122240382**	122	4.803	240	9.449	1 1/2"	2	12° or 20°
CST122060402**	122	4.803	60	2.362	40mm	2	12° or 20°
CST122100402**	122	4.803	100	3.937	40mm	2	12° or 20°
CST122130402**	122	4.803	130	5.118	40mm	2	12° or 20°
CST122150402**	122	4.803	150	5.906	40mm	2	12° or 20°
CST122180402**	122	4.803	180	7.087	40mm	2	12° or 20°
CST122230402**	122	4.803	230	9.055	40mm	2	12° or 20°
CST122240402**	122	4.803	240	9.449	40mm	2	12° or 20°
CST122060384**	122	4.803	60	2.362	1 1/2"	4	12° or 20°
CST122100384**	122	4.803	100	3.937	1 1/2"	4	12° or 20°
CST122130384**	122	4.803	130	5.118	1 1/2"	4	12° or 20°
CST122150384**	122	4.803	150	5.906	1 1/2"	4	12° or 20°
CST122180384**	122	4.803	180	7.087	1 1/2"	4	12° or 20°
CST122230384**	122	4.803	230	9.055	1 1/2"	4	12° or 20°
CST122240384**	122	4.803	240	9.449	1 1/2"	4	12° or 20°
CST122060404**	122	4.803	60	2.362	40mm	4	12° or 20°
CST122100404**	122	4.803	100	3.937	40mm	4	12° or 20°
CST122130404**	122	4.803	130	5.118	40mm	4	12° or 20°
CST122150404**	122	4.803	150	5.906	40mm	4	12° or 20°
CST122180404**	122	4.803	180	7.087	40mm	4	12° or 20°
CST122230404**	122	4.803	230	9.055	40mm	4	12° or 20°
CST122240404**	122	4.803	240	9.449	40mm	4	12° or 20°
CST137060464**	137	5.394	60	2.362	1 13/16"	4	12° or 20°
CST137100464**	137	5.394	100	3.937	1 13/16"	4	12° or 20°
CST137130464**	137	5.394	130	5.118	1 13/16"	4	12° or 20°
CST137150464**	137	5.394	150	5.906	1 13/16"	4	12° or 20°
CST137180464**	137	5.394	180	7.087	1 13/16"	4	12° or 20°
CST137230464**	137	5.394	230	9.055	1 13/16"	4	12° or 20°
CST137240464**	137	5.394	240	9.449	1 13/16"	4	12° or 20°

Hydro bore and self-centering sleeves cutterheads quoted on request.

Corrugated Back Moulder Heads

Dual Hook Angle Moulder Heads

PART NUMBER	CUTTING CIRCLE		CUTTING LENGTH		BORE DIAMETER	NUMBER OF KNIVES	HOOK ANGLE
	mm	Inch	mm	inch			
CST1220603841220	122	4.803	60	2.362	1 1/2"	2/2	12°/20°
CST1221003841220	122	4.803	100	3.937	1 1/2"	2/2	12°/20°
CST1221303841220	122	4.803	130	5.118	1 1/2"	2/2	12°/20°
CST1221503841220	122	4.803	150	5.906	1 1/2"	2/2	12°/20°
CST1221803841220	122	4.803	180	7.087	1 1/2"	2/2	12°/20°
CST1222303841220	122	4.803	230	9.055	1 1/2"	2/2	12°/20°
CST1222403841220	122	4.803	240	9.449	1 1/2"	2/2	12°/20°
CST1220604041220	122	4.803	60	2.362	40mm	2/2	12°/20°
CST1221004041220	122	4.803	100	3.937	40mm	2/2	12°/20°
CST1221304041220	122	4.803	130	5.118	40mm	2/2	12°/20°
CST1221504041220	122	4.803	150	5.906	40mm	2/2	12°/20°
CST1221804041220	122	4.803	180	7.087	40mm	2/2	12°/20°
CST1222304041220	122	4.803	230	9.055	40mm	2/2	12°/20°
CST1222404041220	122	4.803	240	9.449	40mm	2/2	12°/20°
CST1370604641220	137	5.394	60	2.362	1 13/16"	2/2	12°/20°
CST1371004641220	137	5.394	100	3.937	1 13/16"	2/2	12°/20°
CST1371304641220	137	5.394	130	5.118	1 13/16"	2/2	12°/20°
CST1371504641220	137	5.394	150	5.906	1 13/16"	2/2	12°/20°
CST1371804641220	137	5.394	180	7.087	1 13/16"	2/2	12°/20°
CST1372304641220	137	5.394	230	9.055	1 13/16"	2/2	12°/20°
CST1372404641220	137	5.394	240	9.449	1 13/16"	2/2	12°/20°

Hydro bore and self-centering sleeves cutterheads quoted on request.

Reference Engravers

PART NUMBER	CUTTING CIRCLE		CUTTING LENGTH		BORE DIAMETER	NUMBER OF KNIVES
	mm	inches	mm	inches		
RE150123822	150	5.906	12	0.472	1 1/2"	2+2
RE150124022	150	5.906	12	0.472	40mm	2+2
RE165124622	165	6.496	12	0.472	1 13/16"	2+2

The above reference engravers are two wings with two spurs cut and include a full set of inserts.
Other sizes available - Call for price and delivery.

Replacement Carbide Inserts

ICK7001	Carbide Insert - 12 x 12 x 1.5mm - Sold in boxes of 10 pieces - Priced each
ICK7007	Carbide Insert - 14 x 14 x 2mm - Sold in boxes of 10 pieces - Priced each

Phone: 866-770-8665 - www.carolinatools.com - Fax: 866-418-8665

Spiral Plus Moulder Cutterheads



- **Precision manufactured and balanced**
- **Made in USA**
- **Standard & custom sizes**
- **Alloy or steel bodies**
- **Roughing or finishing cutters**
- **Straight, self-centering sleeve & hydraulic bore available**

PART NUMBER	CUTTING CIRCLE		CUTTING LENGTH		BORE DIAMETER	NUMBER OF INSERTS
	mm	inch	mm	inch		
SP1251003803	125	4.921	100	3.937	1 1/2"	27
SP1251303803	125	4.921	130	5.118	1 1/2"	36
SP1251503803	125	4.921	150	5.906	1 1/2"	42
SP1251803803	125	4.921	180	7.087	1 1/2"	51
*SP1252303802	125	4.921	230	9.055	1 1/2"	44
SP1252303803	125	4.921	230	9.055	1 1/2"	66
SP1252403803	125	4.921	240	9.449	1 1/2"	69
SP1251004003	125	4.921	100	3.937	40mm	27
SP1251304003	125	4.921	130	5.118	40mm	36
SP1251504003	125	4.921	150	5.906	40mm	42
SP1251804003	125	4.921	180	7.087	40mm	51
*SP1252304002	125	4.921	230	9.055	40mm	44
SP1252304003	125	4.921	230	9.055	40mm	66
SP1252404003	125	4.921	240	9.449	40mm	69
SP1401004603	140	5.512	100	3.937	1 13/16"	27
SP1401304603	140	5.512	130	5.118	1 13/16"	36
SP1401504603	140	5.512	150	5.906	1 13/16"	42
SP1401804603	140	5.512	180	7.087	1 13/16"	51
*SP1402304602	140	5.512	230	9.055	1 13/16"	44
SP1402304603	140	5.512	230	9.055	1 13/16"	66
SP1402404603	140	5.512	240	9.449	1 13/16"	69

*These cutterheads are two wing effective cut and designed as a roughing cutterhead for the first bottom spindle.

All other cutterheads are three wing effective cut.

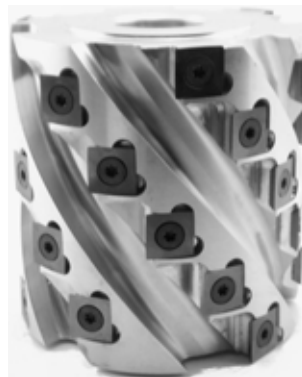
Aluminum alloy bodies. Steel bodies available at the same price.

Other sizes available

Replacement Carbide Inserts & Screws

ICK7009	Carbide Insert - 15 x 15 x 2.5mm (radius)
1200016	Screw - M5 x 13 T-20
1100015	T20 x 100 Torx Wrench

Spiral Plus Shaper Cutterheads



PART NUMBER	Number Of Wings	CUTTING CIRCLE inch	CUTTING LENGTH inch	BORE DIAMETER	NUMBER OF INSERTS
*CST24	4	4"	4"	1 1/4"	16
*CST25	4	4"	5"	1 1/4"	20
*CST26	4	4"	6"	1 1/4"	24
CST27	6	4"	4"	1 1/4"	24
CST28	6	4"	5"	1 1/4"	30
CST29	6	4"	6"	1 1/4"	36

*These cutterheads are two wing effective cut and designed as a roughing cutterhead.

All other cutterheads are three wing effective cut.

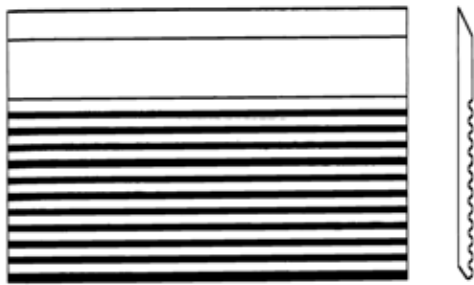
Other sizes available

Replacement Carbide Inserts & Screws

ICK7009	Carbide Insert - 15 x 15 x 2.5mm (radius) - Sold in boxes of 10 pieces - Priced each
1200016	Screw - M5 x 13 T-20 - Priced Each
1100015	T20 x 100 Torx Wrench



Corrugated Back Knife Steel



Carolina Specialty Tools offers two grades and bevel or flat bottom 60° corrugated back knife steel.

M2HSS is hardened to 62 Rc for better wear resistance in harder woods and longer runs.

High Performance is hardened to 62 Rc and is designed for shorter runs where cost matters.

M2HSS Corrugated Back Knife Steel

Part #		Description
Bevel Bottom	Flat Bottom	
TCB1250250M2BB	TCB1250250M2FB	M2HSS 1-1/4x1/4x25 60° CORR
TCB1500250M2BB	TCB1500250M2FB	M2HSS 1-1/2x1/4x25 60° CORR
TCB1750250M2BB	TCB1750250M2FB	M2HSS 1-3/4x1/4x25 60° CORR
TCB2000250M2BB	TCB2000250M2FB	M2HSS 2x1/4x25 60° CORR
TCB2250250M2BB	TCB2250250M2FB	M2HSS 2-1/4x1/4x25 60° CORR
TCB2500250M2BB	TCB2500250M2FB	M2HSS 2-1/2x1/4x25 60° CORR
TCB1250313M2BB	TCB1250313M2FB	M2HSS 1-1/4x5/16x25 60° CORR
TCB1500313M2BB	TCB1500313M2FB	M2HSS 1-1/2x5/16x25 60° CORR
TCB1750313M2BB	TCB1750313M2FB	M2HSS 1-3/4x5/16x25 60° CORR
TCB2000313M2BB	TCB2000313M2FB	M2HSS 2x5/16x25 60° CORR
TCB2250313M2BB	TCB2250313M2FB	M2HSS 2-1/4x5/16x25 60° CORR
TCB2500313M2BB	TCB2500313M2FB	M2HSS 2-1/2x5/16x25 60° CORR
TCB2750313M2BB	TCB2750313M2FB	M2HSS 2-3/4x5/16x25 60° CORR
TCB3000313M2BB	TCB3000313M2FB	M2HSS 3x5/16x25 60° CORR

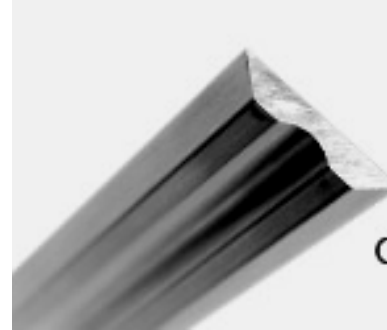
High Performance Corrugated Back Knife Steel

Part #		Description
Flat Bottom		
TCB1250250HPFB		HP 1-1/4x1/4x25 60° CORR
TCB1500250HPFB		HP 1-1/2x1/4x25 60° CORR
TCB1750250HPFB		HP 1-3/4x1/4x25 60° CORR
TCB2000250HPFB		HP 2x1/4x25 60° CORR
TCB2250250HPFB		HP 2-1/4x1/4x25 60° CORR
TCB2500250HPFB		HP 2-1/2x1/4x25 60° CORR
TCB1250313HPFB		HP 1-1/4x5/16x25 60° CORR
TCB1500313HPFB		HP 1-1/2x5/16x25 60° CORR
TCB1750313HPFB		HP 1-3/4x5/16x25 60° CORR
TCB2000313HPFB		HP 2x5/16x25 60° CORR
TCB2250313HPFB		HP 2-1/4x5/16x25 60° CORR
TCB2500313HPFB		HP 2-1/2x5/16x25 60° CORR
TCB2750313HPFB		HP 2-3/4x5/16x25 60° CORR
TCB3000313HPFB		HP 3x5/16x25 60° CORR

Terminus™ “Style” Knives

Terminus™ “Style” HSS Knives	Terminus™ “Style” Carbide Knives
Part #	Part #
KNIAHSS030T	KNIAC030T
KNIAHSS050T	KNIAC050T
KNIAHSS060T	KNIAC060T
KNIAHSS080T	KNIAC080T
KNIAHSS100T	KNIAC100T
KNIAHSS110T	KNIAC110T
KNIAHSS120T	KNIAC120T
KNIAHSS130T	KNIAC130T
KNIAHSS140T	KNIAC140T
KNIAHSS150T	KNIAC150T
KNIAHSS160T	KNIAC160T
KNIAHSS170T	KNIAC170T
KNIAHSS180T	KNIAC180T
KNIAHSS190T	KNIAC190T
KNIAHSS200T	KNIAC200T
KNIAHSS203T	KNIAC203T
KNIAHSS210T	KNIAC210T
KNIAHSS220T	KNIAC220T
KNIAHSS230T	KNIAC230T
KNIAHSS240T	KNIAC240T
KNIAHSS250T	KNIAC250T
KNIAHSS260T	KNIAC260T
KNIAHSS270T	KNIAC270T
KNIAHSS280T	KNIAC280T
KNIAHSS300T	KNIAC300T
KNIAHSS310T	KNIAC310T
KNIAHSS350T	KNIAC350T
KNIAHSS360T	KNIAC360T
KNIAHSS400T	KNIAC400T
KNIAHSS410T	KNIAC410T
KNIAHSS420T	KNIAC420T
KNIAHSS430T	KNIAC430T
KNIAHSS450T	KNIAC450T
KNIAHSS457T	KNIAC457T
KNIAHSS460T	KNIAC460T
KNIAHSS463T	KNIAC463T
KNIAHSS480T	KNIAC480T
KNIAHSS500T	KNIAC500T
KNIAHSS510T	KNIAC510T
KNIAHSS514T	KNIAC514T
KNIAHSS520T	KNIAC520T
KNIAHSS530T	KNIAC530T
KNIAHSS600T	KNIAC600T
KNIAHSS605T	KNIAC605T
KNIAHSS610T	KNIAC610T
KNIAHSS616T	KNIAC616T
KNIAHSS620T	KNIAC620T
KNIAHSS630T	KNIAC630T
KNIAHSS635T	KNIAC635T
KNIAHSS640T	KNIAC640T
KNIAHSS650T	KNIAC650T

Length
30mm
50mm
60mm
80mm
100mm
110mm
120mm
130mm
140mm
150mm
160mm
170mm
180mm
190mm
200mm
203mm
210mm
220mm
230mm
240mm
250mm
260mm
270mm
280mm
300mm
310mm
350mm
360mm
400mm
410mm
420mm
430mm
450mm
457mm
460mm
463mm
480mm
500mm
510mm
514mm
520mm
530mm
600mm
605mm
610mm
616mm
620mm
630mm
635mm
640mm
650mm



Terminus™ “Style” knives available in both High Speed Steel with 10% tungsten content and Solid Carbide. The HSS knives are great for soft woods and short run applications. The carbide knives are recommended for hardwoods, man made materials and long run applications. Carbide knives can run 8-10 times longer than HSS knives.

Knife sharpening available.

Tersa™ & Centrolock™ “Style” Knives

Tersa™ “Style” Knives

Centrolock™ “Style” Knives

Tersa™ “Style” HSS Knives	Tersa™ “Style” Carbide Knives	Length
Part #	Part #	
KNICHSS060T	KNICC060T	60mm
KNICHSS080T	KNICC080T	80mm
KNICHSS100T	KNICC100T	100mm
KNICHSS110T	KNICC110T	110mm
KNICHSS120T	KNICC120T	120mm
KNICHSS130T	KNICC130T	130mm
KNICHSS150T	KNICC150T	150mm
KNICHSS170T	KNICC170T	170mm
KNICHSS180T	KNICC180T	180mm
KNICHSS210T	KNICC210T	210mm
KNICHSS230T	KNICC230T	230mm
KNICHSS250T	KNICC250T	250mm
KNICHSS260T	KNICC260T	260mm
KNICHSS280T	KNICC280T	280mm
KNICHSS300T	KNICC300T	300mm
KNICHSS310T	KNICC310T	310mm
KNICHSS330T	KNICC330T	330mm
KNICHSS350T	KNICC350T	350mm
KNICHSS360T	KNICC360T	360mm
KNICHSS400T	KNICC400T	400mm
KNICHSS410T	KNICC410T	410mm
KNICHSS420T	KNICC420T	420mm
KNICHSS430T	KNICC430T	430mm
KNICHSS450T	KNICC450T	450mm
KNICHSS500T	KNICC500T	500mm
KNICHSS510T	KNICC510T	510mm
KNICHSS520T	KNICC520T	520mm
KNICHSS530T	KNICC530T	530mm
KNICHSS540T	KNICC540T	540mm
KNICHSS610T	KNICC610T	610mm
KNICHSS630T	KNICC630T	630mm
KNICHSS635T	KNICC635T	635mm
KNICHSS640T	KNICC640T	640mm
KNICHSS650T	KNICC650T	650mm

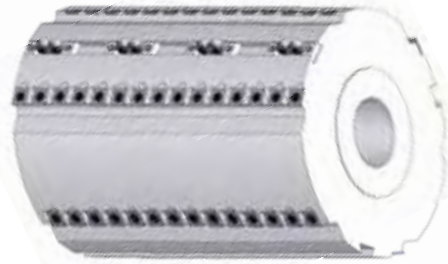
Centrolock™ “Style” HSS Knives	Centrolock™ “Style” Carbide Knives	Length
Part #	Part #	
KNIBHSS020T	KNIBC020T	20mm
KNIBHSS060T	KNIBC060T	60mm
KNIBHSS080T	KNIBC080T	80mm
KNIBHSS100T	KNIBC100T	100mm
KNIBHSS130T	KNIBC130T	130mm
KNIBHSS150T	KNIBC150T	150mm
KNIBHSS170T	KNIBC170T	170mm
KNIBHSS180T	KNIBC180T	180mm
KNIBHSS190T	KNIBC190T	190mm
KNIBHSS210T	KNIBC210T	210mm
KNIBHSS230T	KNIBC230T	230mm
KNIBHSS235T	KNIBC235T	235mm
KNIBHSS240T	KNIBC240T	240mm
KNIBHSS260T	KNIBC260T	260mm
KNIBHSS270T	KNIBC270T	270mm
KNIBHSS310T	KNIBC310T	310mm
KNIBHSS460T	KNIBC460T	460mm
KNIBHSS650T	KNIBC650T	650mm



Tersa™ & Centrolock™ “Style” knives available in both High Speed Steel with 10% tungsten content and Solid Carbide. The HSS knives are great for soft woods and short run applications. The carbide knives are recommended for hardwoods, man made materials and long run applications. Carbide knives can run 8-10 times longer than HSS knives.

Knife sharpening available.

Razorbak Cutterheads



Surface and backout the bottom of your hardwood flooring with the same cutterhead! The lower noise levels and four sided carbide inserts, along with the versatility of the back out placement make this a superior cutterhead. There are multiple types of holders that can be installed.

Holders & Inserts

Part Number	Part Number
Holders	Inserts
DBO1	ICK7070
SBOR	ICK7070
SBOL	ICK7070
VBO	VBOI
G1/4X1/4L	G1/4X1/4I
RR	RR12
	RR13
	RR14
	RR15
	RR16
	RR18
RL	RL12
	RL13
	RL14
	RL15
	RL16
	RL18
WBO	WBOI
B45RI	ICK7007
B45LI	ICK7007
B45RO	ICK7007
B45LO	ICK7007
B60R	B60RI



The Razorbak cutterheads will hold the following holders. These are infinitely adjustable across the width of the cutterhead.

Special holders are available.



Razorbak Cutterheads

PART NUMBER	CUTTING CIRCLE		CUTTING LENGTH		BORE DIAMETER	NUMBER OF INSERTS
	mm	inch	mm	inch		
RB1251003842	125	4.921	100	3.937	1 1/2"	16
RB1251303842	125	4.921	130	5.118	1 1/2"	20
RB1251503842	125	4.921	150	5.906	1 1/2"	24
RB1251803842	125	4.921	180	7.087	1 1/2"	36
RB1252303842	125	4.921	230	9.055	1 1/2"	44
RB1252403842	125	4.921	240	9.449	1 1/2"	48
RB1251004042	125	4.921	100	3.937	40mm	20
RB1251304042	125	4.921	130	5.118	40mm	26
RB1251504042	125	4.921	150	5.906	40mm	30
RB1251804042	125	4.921	180	7.087	40mm	36
RB1252304042	125	4.921	230	9.055	40mm	44
RB1252404042	125	4.921	240	9.449	40mm	48
RB1401004642	140	5.512	100	3.937	1 13/16"	20
RB1401304642	140	5.512	130	5.118	1 13/16"	26
RB1401504642	140	5.512	150	5.906	1 13/16"	30
RB1401804642	140	5.512	180	7.087	1 13/16"	36
RB1402304642	140	5.512	230	9.055	1 13/16"	44
RB1402404642	140	5.512	240	9.449	1 13/16"	48

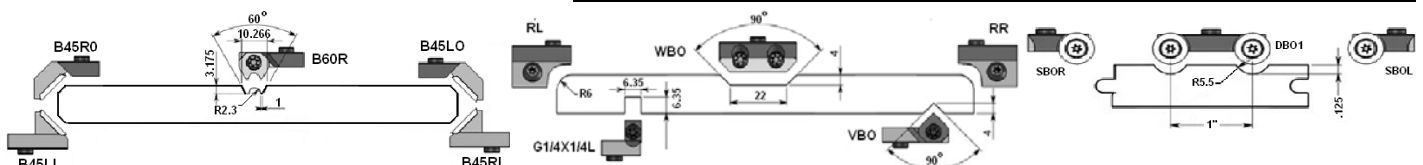
4 wing effective cut with 2 dovetail slots - Includes one set of carbide inserts.

Aluminum alloy bodies. Steel bodies available at same price.

Other sizes and bores available.

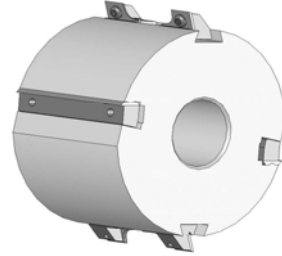
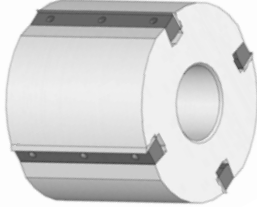
Replacement Carbide Inserts & Screws

ICK7009	Carbide Insert - 15 x 15 x 2.5mm (radius)
1200016	Screw - M5 x 13 T-20
1100015	T20 x 100 Torx Wrench



Phone: 866-770-8665 - www.carolinatools.com - Fax: 866-418-8665

EZ-Plane & EZ-Plane Plus Cutterheads



EZ-Plane

EZ-Plane Plus

CST offers the EZ-Plane cutterhead for surfacing or S4S applications.

With the EZ-Plane Plus you can surface, radius, bevel, groove and backout the bottom of your hardwood flooring or create your paneling with the same cutterhead!

The knife changing systems assures you of a constant cutting circle.

Standard (see previous page) and special holders available.

PART NUMBER EZ Plane	PART NUMBER EZ Plan Plus	CUTTING CIRCLE		CUTTING LENGTH		BORE DIAMETER
		mm	inch	mm	inch	
EZ125100384	EZ1251003842	125	4.921	100	3.937	1 1/2"
EZ125130384	EZ1251303842	125	4.921	130	5.118	1 1/2"
EZ125150384	EZ1251503842	125	4.921	150	5.906	1 1/2"
EZ125180384	EZ1251803842	125	4.921	180	7.087	1 1/2"
EZ125230384	EZ1252303842	125	4.921	230	9.055	1 1/2"
EZ125240384	EZ1252403842	125	4.921	240	9.449	1 1/2"
EZ125100404	EZ1251004042	125	4.921	100	3.937	40mm
EZ125130404	EZ1251304042	125	4.921	130	5.118	40mm
EZ125150404	EZ1251504042	125	4.921	150	5.906	40mm
EZ125180404	EZ1251804042	125	4.921	180	7.087	40mm
EZ125230404	EZ1252304042	125	4.921	230	9.055	40mm
EZ125240404	EZ1252404042	125	4.921	240	9.449	40mm
EZ140100464	EZ1401004642	140	5.512	100	3.937	1 13/16"
EZ140130464	EZ1401304642	140	5.512	130	5.118	1 13/16"
EZ140150464	EZ1401504642	140	5.512	150	5.906	1 13/16"
EZ140180464	EZ1401804642	140	5.512	180	7.087	1 13/16"
EZ140230464	EZ1402304642	140	5.512	230	9.055	1 13/16"
EZ140240464	EZ1402404642	140	5.512	240	9.449	1 13/16"

EZ Plane has 4 wings & EZ Plane Plus adds 2 dovetail slots.

HSS knives included. Carbide knives can be substituted for an additional charge.

Other sizes and bores available.